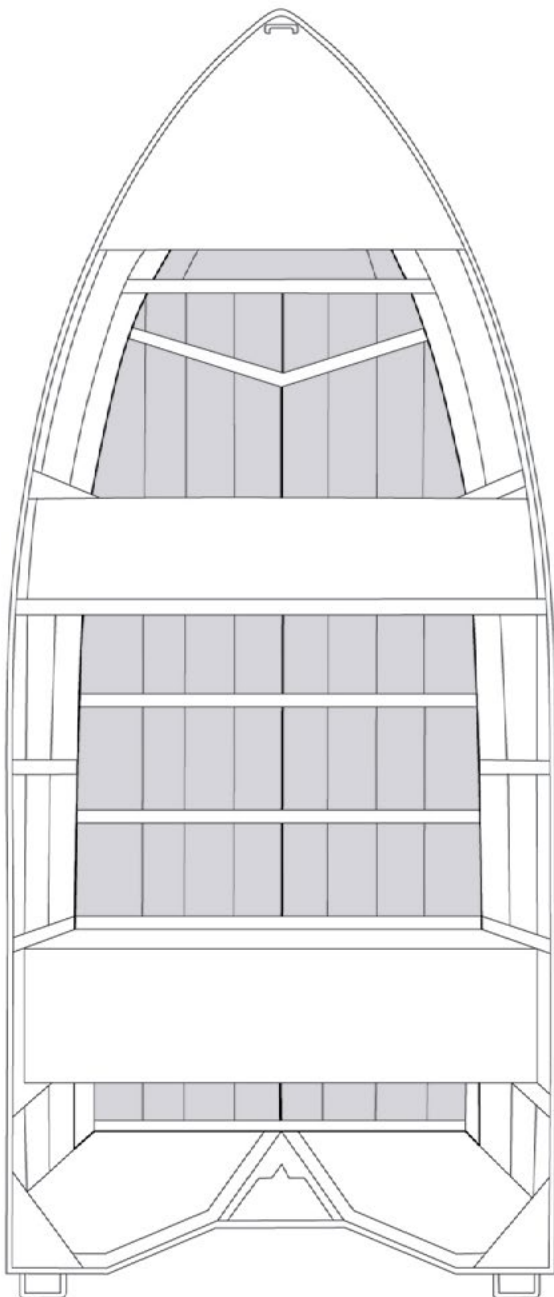




300 RATPACK

UNLEASH YOUR ADVENTUROUS SPIRIT

Aptly named this range of open boats will bring out the angler in you. Designed to explore our inshore Australian waters easily and safely. Stable and versatile with generous freeboard and loaded with features like fully welded foam filled seats and 3mm rolled and welded ribs the The Ratpack is solidly built to ensure you enjoy years of enjoyment in safety. Uniquely Australian the Ratpack Tinnie will get you and your family out there fishing ,boating and crabbing.



BOAT FEATURES

- 1.6mm Pressed Bottom Sheets
- 1.6mm Pressed Side Sheets
- Flat Foredeck
- Foam Filled Thwart Seats X 2
- Port Side Tank Rack
- Anchor Shelf With Tie Off Point
- Rowlock Holders X 2
- Bow Handle
- Rear Handles
- Double Bow Eye
- Flotation
- Bungs
- Gunwale Rubber Insert
- Motor Board
- Stickers
- Australian Builders Plate

BOAT SPECIFICATIONS

Length Overall:	3.00m
Beam:	1.42m
Depth:	0.55m
Bottom Sheet:	1.6mm 5052 Marine Grade
Side Sheet:	1.6mm 5052 Marine Grade
Transom:	LS
Weight (boat only):	65 kgs
Horsepower Rec:	6hp
Horsepower Max:	6hp
Pax:	2 ppl

View the full Stessl Boat range at www.stessl.com.au